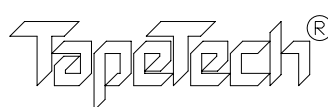

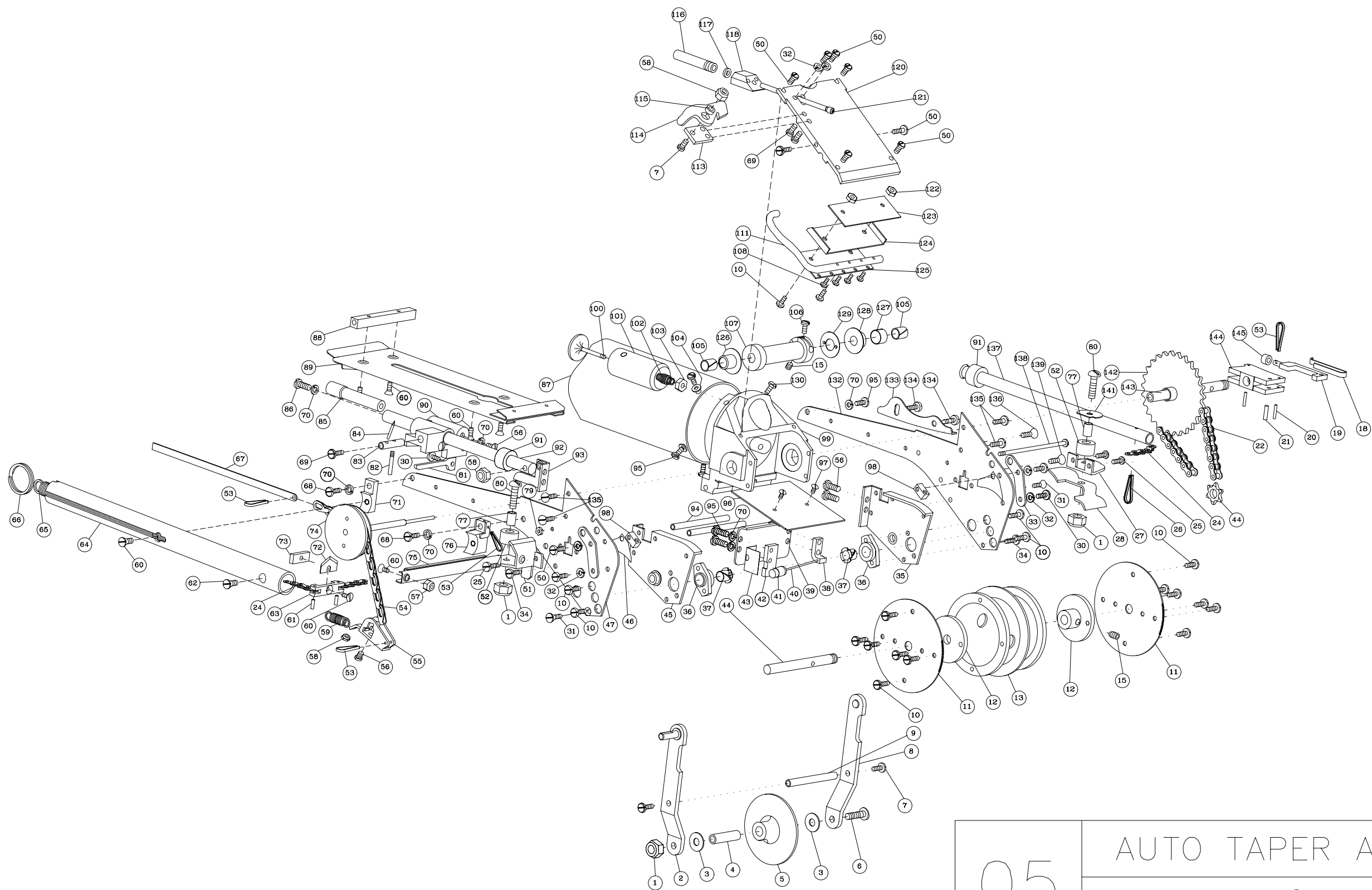


05	AUTO TAPER ASSEMBLY	
	 an  enterprise	REV F



05

AUTO TAPER ASSEMBLY

TopoTech[®] an AXIA enterprise

@ = Part Used in Repair Kit
 % = Part Used in Sub-Assembly

ITEM#	PART #	QTY REQ'D ON TOOL	TapeTech® Automatic Taper 05TT	kits	sub- assemblies
1	059074	3	8-32 HEX ELASTIC STOPNUT		
2	054095F	1	LONG CREASER ASSEMBLY		
3	209042	2	#10 BRASS WASHER	@	
4	050070F	1	AXLE CREASER WHEEL		
5	050073	1	CREASER WHEEL		
6	059092	1	8-32 X 1-1/2 ROUND HEAD SCREW SST		
7	059020	3	6-32 X 3/8 BIND HEAD SCREW SST		
8	054096F	1	SHORT CREASER ASSEMBLY		
9	050023F	1	SPACER		
10	059057	18	4-40 X 3/16 BIND HEAD SCREW SST		
11	050093F	2	TAPER WHEEL	@	
12	050109F	2	DRIVE HUB		
13	050094F	1	TAPER WHEEL SPOOL		
15	059084	2	8-32 X 1/4 SETSCREW 1/2 DOG SST	@	
18	050115F	1	SPRING DRIVE DOG	@	%
19	054116F	1	DRIVE DOG ASSY.		%
20	059119	2	DRIVE DOG HOLDER PIN (REPAIR ONLY)		
21	059120	1	DRIVE DOG AXLE		%
22	058126F	1	MAIN CHAIN		
24	050142F	2	CUTTER CHAIN		%
25	059161	4	4-40 X 3/8 FILLISTER HEAD SCREW SST		
26	059025	1	5/64" X 1/2" COTTER PIN SST		
27	050141	1	CHAIN ROLLER SUPPORT (LEFT)		
28	050163	1	MAIN CHAIN GUARD		
30	059037	3	4-40 X 1/4 BIND HEAD SCREW SST		%
31	059106	2	4-40 X 5/32 FLAT HEAD SCREW SST		
32	059038	6	#4 MEDIUM SPRING LOCK WASHER		
33	050154	2	BEARING BRACKET		
34	209048	2	4-40 X 1/8" BIND HEAD SCREW SST		
35	054104	1	TAPE RUNNER ASSEMBLY		
36	050150F	2	HUB		
37	059078	2	BEARING NYLINER	@	
38	050009F	1	SPRING HOLDER		
39	050011F	1	DRIP GUARD		
40	059010	1	ROLLER AXLE SPRING	@	
41	056007	1	LOCK ROLLER ASSEMBLY (BRAKE)	@	
42	050043F	1	ANVIL		
43	059044	1	INSERT		
44	054110F	1	SHAFT DRIVER ASSEMBLY (INCLUDES SPROCKET)		
45	054075	1	TAPE RUNNER ASSEMBLY		
46	059098	2	SHIM, SIDE PLATE		
47	050089	1	SIDE PLATE (WITH SERIAL #)		
50	059156	10	4-40 X 5/16 BIND HEAD SCREW SST		
51	050046	1	CHAIN ROLLER SUPPORT (RIGHT)		
52	050134	2	CHAIN ROLLER		
53	059143	4	1/16X1/2" COTTER PIN SST		
54	050145	1	CREASER CHAIN		
55	050079	1	CREASER CRANK		
56	059013	4	6-32 X 5/16 ROUND HEAD SCREW SST		%
57	609012	5	4-40 STOPNUT ELASTIC SST		
58	059018	3	# 6-32 LOCKNUT		
59	050081F	1	SPRING CREASER RETAINER	@	
60	059102	6	4-40 X 1/4 FLAT HEAD SCREW SST		%
61	059129	2	CUTTER BLOCK PIN		%
62	509010	1	4-40 X 5/16 FLAT HEAD SCREW SST		
63	050135F	1	CUTTER BLOCK		%
64	050063	1	CUTOFF SPRING COVER		
65	050132F	2	SPRING CUT OFF		%
66	059067	1	KEY RING		%
67	050249	1	CREASER CONNECTOR		

@ = Part Used in Repair Kit
 % = Part Used in Sub-Assembly

ITEM#	PART #	QTY REQ'D ON TOOL	TapeTech® Automatic Taper 05TT	kits	sub- assemblies
68	059091	2	6-32 X 1/2 FILLISTER HEAD SCREW SST	@	
69	059051	3	6-32 X 3/16 FILLISTER HEAD SCREW SST		%
70	059016	7	#6 LOCKWASHER MEDIUM SPRING SST		%
71	050072F	1	REAR SUPPORT		
72	050133	1	PYRAMID BLADE	@	%
73	050137F	1	CUTTER BLOCK CLAMP		%
74	054032F	1	PUSH ROD ASSEMBLY		
75	050113F	1	CUTTER BLOCK TUBE		
76	050071F	1	FRONT SUPPORT		
77	050128F	2	CHAIN ROLLER BUSHING		
79	059087	1	3-48 MINIATURE HEX NUT		
80	059127	6	8-32 X 5/8 TRUSS HEAD SCREW SST	@	
81	059022	2	NEEDLE SPRING		%
82	050027	1	NEEDLE HOLDER LOCK		%
83	050050F	1	NEEDLE HOLDER		%
84	059049	1	NEEDLE GOOSER	@	%
85	050030	1	MAGNET		%
86	059012	1	6-32 X 3/8 FILLISTER SCREW SST		
87	056248G	1	TAPETECH GOLD TAPER TUBE		
88	050090F	1	SPACER BAR		
89	054101	1	TAPE GUIDE ASSEMBLY		
90	050031	1	GOOSER BUSHING (REPAIR ONLY)		
90	054028	1	GOOSER BODY ASSEMBLY		%
91	050068	2	GOOSER & CUTTER CHAIN STOP.		
92	054111F	1	GOOSER GUIDE/BUSHING		
93	050053	1	GOOSER RELEASE CAM		
94	050152F	2	SPACER ROD		
95	059015	8	6-32 X 1/4 FILLISTER HEAD SCREW SST		
96	054048F	1	BAFFLE PLATE ASSEMBLY		
97	059047	2	2/56 X 1/8" BIND HEAD SCREW SST		
98	050080F	2	SCREW BLOCK		
99	056100F	1	TAPER HEAD		
100	050064F	1	VALVE		
101	054059F	1	FILLER VALVE ASSEMBLY		
102	059061F	1	VALVE SPRING		
103	059060	1	3-48 HEX STOPNUT		
104	059164	5	#6 EXT WASHER		
105	059148	2	NYLINER BEARING	@	
106	059014	1	4-40 X 3/16 TRUSS HEAD SCREW SST		
107	050083F	1	CABLE DRUM		
108	059056	4	2-56 X 3/16 BIND HEAD SCREW SST		
111	050001	1	HANDLE OUTLET VALVE		
113	050036	1	BRACKET BASE		
114	050019	1	DISENGAGING CAM		
115	050017	1	COLLAR BUSHING		
116	050041F	1	DISENGAGING ROD BEARING		
117	059040	1	O-RING		
118	050039F	1	O-RING HOUSING		
120	056055F	1	COVER PLATE		%
121	050034F	1	DISENGAGING ROD		
122	059005	2	4-40 HEX NUT		
123	050004	1	WIPER RETAINER		
124	050003	1	WIPER, CONTROL VALVE		
125	050058	1	CONTROL VALVE		
126	050086F	1	BUSHING, HEAD	@	
127	059149	1	TENITE BEARING	@	
128	050099F	1	BUSHING HEAD	@	
129	059082	1	DRUM WASHER	@	
130	059085	1	8-32 X 1/4 FILLISTER HEAD SCREW SST		
132	050105	1	SIDE PLATE		

@ = Part Used in Repair Kit
 % = Part Used in Sub-Assembly

ITEM#	PART #	QTY REQ'D ON TOOL	TapeTech® Automatic Taper 05TT	kits	sub- assemblies
133	050123	1	CAM		
134	059122	2	BIND HEAD TYPE Z SELF TAP #6 X 5/16		
134	059117	1	SELF TAP #8 X 5/16 BIND HD (REPAIR ONLY)		
135	059021	4	4-40 X 5/32 BIND HEAD SCREW SST		
136	059107	1	6-32 X 1/4 FLAT HEAD SCREW SST		
137	050144F	1	CUTTER CHAIN TUBE LINK		
138	050140F	1	3-48 SPEC. TIE ROD		
139	059029	1	6-32 X 5/8 FLAT HEAD SCREW SST		
141	059024	1	CHAIN KEEPER		
142	054114F	1	SPROCKET DRIVER ASSEMBLY		
143	052121F	1	CABLE DRUM SHAFT		%
144	054118F	1	DRIVE DOG HOLDER ASSEMBLY (REPLACES 050118)		%
145	059108	1	ROLLER, DRIVE DOG		
150	054209F	2	CABLE	@	%
151	054219	1	CONTROL EXTENSION ARM		
152	059227	2	10-32 SPECIAL NUT		
153	050226	2	GUIDE ROLLER		
154	059225	2	10-32 LOCKNUT		
155	050232	1	CONTROL EXT. SUPPORT		
156	050221F	1	BRACKET, CONTROL TUBE		
157	059220	2	8-32 X 5/16 SETSCREW CUP POINT SST		
158	059210	8	5-40 X 3/4" RD HEAD SCREW SST		
159	059213	16	SPECIAL WASHER		
160	050215	8	CONTROL TUBE ROLLER		
161	050214F	8	ROLLER BUSHING		
162	059212	8	5-40 HEX FLEX LOCK NUT		
163	050212F	5	LOCK BLOCK		
164	059230	10	5-40 X 13/32 BIND HEAD SCREW SST		
165	059238	3	1/4-20 X 1/2" FLAT HEAD SCREW SST		
166	059206	1	1/4-20 HEX NUT		%
167	059201	1	1/4-20 HEX CASTLE NUT		%
168	050204	1	PLUNGER CUP WASHER		%
173	050254	3	BAND		
174	059252	3	6-32 X 3/16 ROUND HEAD SCREW SST		
176	050251F	1	TUBE PROTECTOR		
177	054245F	1	CREASER TRIGGER		
177	051262	1	TRIGGER BUSHING (REPAIR ONLY)		
178	050242F	1	NUT 1/4-20 SPECIAL HEX NUT		
179	050243F	1	STUB SHAFT		
180	050240	1	POST SOCKET		
181	059224	2	1/4" WASHER STANDARD SST		
182	050233	3	BAND ADAPTOR		
183	809006	1	#14 BRASS WASHER	@	
184	709043	1	#63 S-HOOK		
185	050205	1	1/4-20X3/4" HED HD CUP BOLT		%
186	050200	1	PLUNGER		%
187	050203	1	PLUNGER CUP		%
188	050244	1	TAPE SPOOL		
189	050237	1	SHAFT SPOOL		
190	058241	1	TAPE ROLL KEEPER		
191	050231	1	BAND POST		
192	050235	1	BAND		
193	056222T	1	TT SPLASH ANODIZED LOGO CONTROL TUBE		
194	059217	4	4-40 X 3/8 BIND HEAD SCREW SST		
195	059228	2	10-32X1" FLAT HEAD SCREW SST		
196	050229	1	BAND		

TapeTech™ Automatic Taper Parts Assembled					
PART NUMBER			DESCRIPTION / PARTS INCLUDED		
054110F			SHAFT DRIVER ASSEMBLY (INCLUDES SPROCKET)		
			050125F SPROCKET DRIVER		
			050110F CUTTER BLOCK TUBE		